

THE VOICE OF GALILEE



Bellfest
Page 2

Pastor Belzer's
Installation service
Page 3

Ash Wednesday
Page 5

Adult Forums
and Events
Page 6

FEBRUARY 2026

We Are Called to Live Our Baptism

We are living in unprecedented times— economic uncertainty and unresolved racism, escalating violence against our communities and endless protests. There is much that we cannot control, but we can control our choices of behavior. Now is the time to intentionally choose healthy patterns to offset the grief and lament related to these times as we shift to a new normal of peace. Grief upon grief. Uncertainty upon uncertainty. We are created in the image of God, and God assures us that through faith we can be resilient. "We do not know what we do not know." Isn't that true? And so, we listen and enter into the lament. Why? We are all God's children, and some of our family, friends, and neighbors are hurting.

Striving for justice and peace might sound exhausting—like an unending task (rather than a gift) which has the potential to keep us awake at night. Injustice and strife reflect human existence at its worst. God has created all that exists. Humans are created in the very image of God.

Consequently, God loves each person, and we are to do likewise. "Beloved, since God loved us so much, we also ought to love one another." (1 John 4:11) But not everyone is likable or lovable, including us. Nevertheless, this does not mean we (or they) are unloved or of no value to God. No, it is just the opposite. God unabashedly loves each of us—though admittedly, not all of our actions. God hears the cries of God's beloved—and responds. We, too, are to hear those same cries and respond. The prophet Isaiah pleads, "... cease to do evil, learn to do good; seek justice, rescue the oppressed, defend the orphan, plead for the widow." (Isaiah 1:16b-17) Justice, peace, and love are intertwined. For in reality:

There can be NO peace without justice.

There can be NO justice without peace.

There can be NO peace and justice without love.

For justice and peace are born from love.

Striving for justice and peace becomes a realized gift of discipleship as we discover a God-inspired love for neighbor, which will not allow us to be deaf, silent, or apathetic. The gift comes in being driven to God for courage, wisdom, and compassion. The gift comes when we face injustice and are empowered by the Holy Spirit to speak the truth in love. The gift comes in being so aligned with the crucified Christ that his love fills and compels us to love our neighbor beyond what we thought would be humanly possible.

As we love our neighbor, we are drawn into their story and their pain. Our voices are offered for those who cannot speak on their own behalf. Our prayers join the prophet Amos, "But let justice roll down like waters, and righteousness like an ever-flowing stream." (Amos 5:24) We join the crucified Christ and share the pain of the world as we strive for justice and peace.

The gift comes, by the grace of God, when we are allowed to view each person as God views us, the beloved of God, as sheep of God's own fold, a lamb of God's own flock, and a sinner of God's own redeeming.

Thanks be to God! Peace and blessings, Pastor Jacqueline Belzer

AROUND OUR CHURCH

GALILADIES

The GaliLadies welcomed two new members in January.

We pay \$5.00 dues this month to build up our finances. (Then we spend it later)

Lunch was served. After lunch we had our meeting. We talked about our state of Minnesota. We talked about the cards we gave Harmony Gardens for Christmas and if we should do cards for another care center.

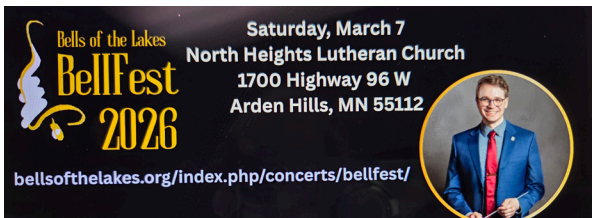
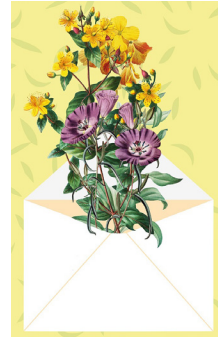
We played RLC (right, left, center) and 4 people won prizes.

We also talked about serving coffee and treats on Sunday.

Next month we start making Easter cards for the care center.

We recycle cards that people have received. We cut the pictures off the front and sometimes use the verse. If anyone has cards to donate we'll be happy to get them.

Anyone wanting to join a fun group join GaliLadies.



The Bells of Galilee will be participating again in Bellfest!, a one day bell festival that's being held at North Heights Lutheran Church, 1700 West Hwy. 96 in Arden Hills, MN, on Saturday, March 7. There is a free will concert scheduled for 3:00 pm that day that you are invited to

attend. You'll be able to hear all of the music that we've prepared. And we'd love to see your familiar faces in the audience. Please come and bring a friend or two with you!.

A couple notes from Pastor Belzer:

-Monday is her day off;

-When calling her phone, please leave a message.



From Joyce Solberg:

Remember Christena Mundt Egger—one of the kids who grew up here at Galilee Lutheran Church? I thought you'd enjoy a little update.

I ran into Christena, her husband, and their baby girl at Keys the other day. It was so wonderful to see them and catch up for a bit. They're doing great, and it was especially sweet to meet their little one.

JANUARY COUNCIL MEETING

The Galilee Council met on January 8th, 2026. Two members were absent due to health issues, Larry Biermeier and Darla Nelson. Council members reviewed the proposed church budget for 2026 and approved presenting the budget at the Annual Congregational meeting, scheduled for January 25th. Nominations were given for new Council President, Vice President and Secretary. These nominations were seconded and voted on as follows: New Council President is Joyce Solberg, new Vice President is CarolAnn Hart and Council Secretary is Ron Peterson for his second term.

Elen Swenson
Retiring Council President

PASTOR BELZER'S INSTALLATION SERVICE



A joyful day at Galilee, welcoming Pastor Belzer. Guests included Pastor's daughter and boyfriend, as well as Deacon Krista participating in the ceremony. Galilee is blessed to have our new Pastor. Praise be to God!

AROUND OUR CHURCH



Young at Heart has been around since at least 2013. It was begun to give our retirees the opportunity of having a social gathering during daylight hours.

Several of our original group have been called home: Duane and Annette Haukebo, Roger and Betty Link Ettel, Del Sailer, Lyle Sorum, Bill Koch, and Kathy Juneau. We miss others who have moved from the area: Barb Bartok, Phyllis Ferns, Betty Jeans, and Sonia Rivas. Our number has gone from 20+ to about 10 for current get-togethers.



On January 13th we welcomed Pastor Jacqueline Belzer to join us for lunch. Brenda Meyer (Sharell Babin's daughter) is back living in Saint Paul, so tries to attend YAH at least once a month. We also celebrated Abe's 72nd birthday.

We gather the 2nd and 4th Tuesday of each month at 12:15pm for a potluck luncheon in the Galilee library. After we have socialized, eaten, and cleaned up, at about 2:00pm, we split into two groups, dig out the cards, and one group plays Twitch while the other group plays Social Security (similar to Sorry, or Parcheesi). We are a friendly bunch who enjoys getting together and **we would love to have more people join us whenever you can.** If you have any questions, please call Karen Groebner at 651-488-9074 or Sharell Babin at 651-746-9074. We hope to see you on February 10th and 24th.

Elaine Blade passed away on Thursday, January 15, 2026

She lived a good long life of 94 years.

Dick and Elaine were charter members of Galilee. Dick was on the planning committee for the new church back then many years ago. Elaine served on many committees while raising three sons. She was a very busy lady.

Services were held on Friday, January 23 at Faith Lutheran Church in Hutchinson, MN Rest in Peace, Elaine. You will always be remembered!

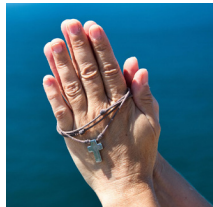


Valentine's Day originated from a blend of ancient Roman fertility rituals (Lupercalia) and Christian traditions honoring Saint Valentine, a martyr from the 3rd century who allegedly defied Emperor Claudius II by marrying couples in secret. It became associated with romance in the Middle Ages, with formal card-sending traditions emerging in the 1800s.

AROUND OUR CHURCH

Prayer Requests*

Ron Jarombek
Sanny Anderson
Adrian Davis
Nijah Davis
Dave Macklin
Vangie Schroeder
Nancy Seefert-Tomczyk
Nick Tomczyk
Ron Peterson
Mary Lanoux
Bill Zrust
Randall Strand
Darla Nelson
Larry Biermeier
Janis Behrens
Shawn Altendorfer
Family & Friends of Ed Linner
Family & Friends of Bonnie Fuller
Family & Friends of Elaine Blade



Care Center/Homebound:

Justina Blatterman
Kitty Fisch
Bill Friberg
Edith Londroche
David Shores

Missions/Ministry:

Rice Street Gardens
MN Faith Chinese Lutheran Church
Balali & Uhominyi in Iringa, Tanzania

***We will keep those in need of prayer on our list for two months. If we take someone off after two months and they need to stay on, please let the office know 651-488-6769.**



Ash Wednesday is on February 18th. Galilee will hold service at **6 pm** for distribution of ashes and to begin this Holy Season.

If you would like a ride, or if you are willing to drive others to church for that evening, please call the office at 651-488-6769 to let them know.

If you're unable to attend Ash Wednesday service, and wish to receive ashes, please call the office by Tuesday, 2/17. Pastor Belzer will be available from 12noon - 4pm on Ash Wednesday to visit you at home so you may receive blessed ashes.



Continuing throughout the Lenten season, Galilee will gather every Wednesday at 5pm for evening prayer followed by fellowship, with soup and bread being served at 5:30pm

If you would like to bring soup and/or bread, a sign-up sheet is in the narthex.

Wednesdays
February 25
March 4
March 11
March 18
March 25

WORSHIP & EDUCATION

Scripture Lessons

FEBRUARY 1

4th Sunday after Epiphany

Micah 6:1-8

Psalms 15

1 Corinthians 1:18-31

Matthew 5:1-12

FEBRUARY 8

5th Sunday after Epiphany

Isaiah 58:1-9a[9b-12]

Psalms 112:1-9[10]

1 Corinthians 2:1-12[13-16]

Matthew 5:13-20

FEBRUARY 15

Transfiguration of Our Lord

Exodus 24:12-18

Psalms 2

2 Peter 1:16-21

Matthew 17:1-9

FEBRUARY 22

1st Sunday in Lent

Genesis 2:15-17;3:1-7

Psalms 32

Romans 5:12-19

Matthew 4:1-11

Adult Forums & Events

Sunday, Feb 8

*-"Captivating Scandinavia"
with Jackie Nerud*

*Ash Wednesday, 2/18
6pm service*

Sunday, Feb 22

*-Exodus Lending with
Executive Director Anne Leland*

*-MN Faith Chinese
New Year Celebration*

February Lectors

Feb 1 Ron Peterson

Feb 8 Cynthia Erickson

Feb 15 Miriam Peterson

Feb 18 Ash Wed:Elen Swenson

Feb 22 Joan Jarombek

February Ushers

Feb 1 O'Keefes

Feb 8 Zrust/Watson

Feb 15 Hart/Groebner

Feb 22 Solbergs

February Communion

Feb 1 Barb Streng

Feb 8 Miriam Peterson

Feb 15 Elen Swenson

Feb 22 Joyce Solberg



WEDNESDAY BIBLE STUDY***

Bible Study is at 11am and meets in the church library. Currently they are studying the Gospel of Matthew.

*****There will be no bible study on Ash Wednesday**

Volunteer Drivers

A sign-up sheet is in the narthex for those of you willing to be drivers for any Galilee member needing a ride to worship, to appointments, for errands, etc. If you are able, please sign up or email the office:

office.galilee@gmail.com

Greatly appreciated!!



February Birthdays

Miriam Peterson	2/07
Jackson Albert Bergman	2/08
Michael Osterman	2/11
Nuwoe Davis	2/16
Teresa Shores	2/16
Joan Jarombek	2/18
Mike Bergman	2/19
Larry Biermeier	2/27
Taylor Altendorfer	2/28



FEBRUARY 2026

SUNDAY	MONDAY	TUESDAY	WEDNESDAY	THURSDAY	FRIDAY	SATURDAY
1 9a Prayers for Healing 9:30a Galilee Worship 10a MFCLC Choir practice 11a MFCLC Worship	2	3 10a Donut Group	4 11a Bible Study 6p Bell Choir	5 6p Property team mtg	6	7 9a Ham Radio group
8 9:30a Galilee Worship 10a MFCLC Choir 11a MFCLC Worship 11a Adult Forum - Jackie Nerud	9	10 10a Donut Group 12:15p Young At Heart	11 11a Bible Study 1p Villa Park 6p Bell Choir 7.20p Outreach mtg	12 6:30p Council mtg	13	14 VALENTINE'S DAY
15 9:30a Galilee Worship 10a MFCLC Choir practice 11a MFCLC Worship	16 <i>President's Day</i>	17 <i>Chinese New Year</i> 10a Donut Group	18 6p Ash Wed prayers	19 12p GaliLadies	20	21
22 9:30a Galilee Worship 10a MFCLC Choir 11a MFCLC worship 11a Chinese New Year Celebration 11a Adult Forum - Exodus Lending	23	24 10a Donut Group 12:15p Young At Heart	25 11a Bible Study 5p Lenten Service and supper 6p Bell choir	26	27	28
						

GALILEE FEB 2026

EVANGELICAL LUTHERAN CHURCH

145 McCarrons Blvd N (at Rice Street)
Roseville, MN 55113-6923

office.galilee@gmail.com

www.galileelutheranelca.com

Phone: 651-488-6769

SUNDAY WORSHIP: 9:30 A.M.

OFFICE HOURS: M, W, F 9AM-1PM

FEBRUARY 2026

2026 Congregational Council

Joyce Solberg, President
CarolAnn Hart, Vice President
Ron Peterson, Secretary
Joan Jarombek
Elen Swenson
Larry Biermeier
Darla Nelson
Barb Strenge, Treasurer
Miriam Peterson, Financial Secretary

Staff

Pastor: Jacqueline Belzer - 612.703.4752
belzer61@gmail.com

Administrative Assistant: Sue Malenick and
CarolAnn Hart

Music Director: Paul Swenson cell 651-206-6634

Organists: Raymond Nottidge & Tim Rand

Bells of Galilee: Cynthia Erickson
cynthia.erickson@minnmicro.com

GALILEE'S MISSION STATEMENT

To gather people together to hear the story of God's love in Jesus Christ, to be nurtured in faith and knowledge, and to share the Good News through word and deed.

VOICE articles must be received by the
15th of each month. To submit articles for publication in the VOICE or to receive the VOICE newsletter by e-mail, please contact the church office at:
office.galilee@gmail.com.

Reminder:

Galilee is a fragrance-free church.
Some people have an allergy to fragrance which affect their health.
Thank you.



DIEGO'S CORNER

Hi Everyone! My name is Diego. I came with my mom today to help her organize her office. I am 15 years old and I am a Standard Poodle. I am a certified service dog. My Dad (John) and I would visit care centers, hospitals, Ronald McDonald house and Ebenezer in Minneapolis to cheer up residents and patients. I am very happy to be here at Galilee.